



PRO



DANISH QUALITY SINCE 1953

WHO IS ELWIS

- Elwis was founded in 1938 and in 1953 our founder, Mogens Wilsbech invented the World's first low voltage hand lamp.
- The company name ELWIS is an amalgamation of the word ELEktric and the first letters in the founders family name WILSbech.
- Elwis is a 3rd generation family owned company with headquarters in Denmark.
- We have 65 years of design and manufacturing experience to help develop and produce products for leading professional wholesalers and distributors all over the world.
- We design and manufacture both in the Elwis brand and private label brands/ODM.
- Elwis offers a complete range of portable lighting to meet the needs of professional mechanics, electricians and other industrial craftsmen as well as demanding users like ultra-runners, Nordic skiers, climbers and other extreme outdoor sportspeople.

DESIGN AND PRODUCTION

Elwis lamps are designed by an experienced team of engineers and designers. Besides the design and development of our own Elwis branded products we also help our ODM customers to manage the processes of design, engineering, testing, tooling and approvals according to the regulations of each market. Nowadays, most of our production takes place in China where we have two exclusive factory partnerships. We only use the best quality LEDs from leading American and Japanese brands. Other parts like batteries and adaptors are also from trusted manufacturers with whom we have a long-term relationship.

QUALITY CONTROL

To secure high quality in all aspects of our business we have partnered up with an external engineering partner in Denmark who has extensive expertise in testing electronic devices. No new design is released for final production before it has been approved by both our own engineers and our external partner. When a lamp is finally released for production and sales, continuous tests are made with the lamps before distribution. All our products comply with the EU product safety standards, health and environmental standards, sector-specific standards and standards in international trade.



CONTENTS

Who is Elwis	2
Contents	3

PRO Series

What is PRO Series	4
Headlamps	4
Flashlights blister and POS display	6
Flashlights box.....	7
Inspection lamps	8
Task lamps.....	9
Inspection lamps, fluorescent tube	11

Pocket Series

What is POCKET Series	14
Headlamps	14
Flashlights.....	15
Miscellaneous products and accessories	16

PRO SERIES

The Elwis PRO Series is made for professionals and other demanding users who needs reliable lighting products for all purposes. The Elwis PRO Series is a range of lamps that are attractive, technically advanced and – most importantly – functionally superior. The Elwis PRO Series is developed by an experienced team in cooperation with professional end users from different industries using a “no compromise” approach – resulting in perfect work tools. You can always recognize the PRO Series products on the PRO Series logo and the easily recognizable colors: black and anthracite gray and red.

HEADLAMPS

H1 700H1



Quality lightweight headlamp with bright, wide beam

- Wide beam – clear circle (1.6 m from 1 m distance)
- 2 digital light modes: Low beam (20%), high beam (100%)
- Optical lens



75 AND 365 LUMENS



3 X AAA ALKALINE DURACELL



UP TO 30 HOURS

H2-R 700H2-R-A OR B



Rechargeable headlamp with 2 light modes & red back LED

- Zoom - Adjustable beam.
- Adapt light to your purpose (420 lumens and 82 lumens)
- MICRO USB – USB cable – included



82 AND 420 LUMENS

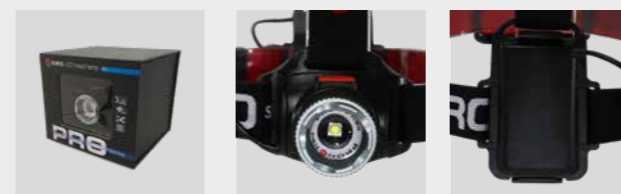


RECHARGEABLE



RED SAFETY LED IN BACK

H3 700H3



Headlamp with 2 light modes, twist focus and flex function

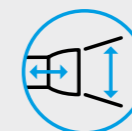
- Choose wide beam or twist focus for detail
- Adapt light to your purpose (330 lumens and 110 lumens)
- Durable headlamp – a nice mix between H1 and H2



110 AND 330 LUMENS



3 X AAA ALKALINE



FLEX & ZOOM FUNCTION

H4-R 700H3

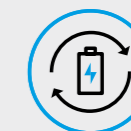


Rechargeable headlamp with 2 light modes & red LED

- Main beam with twist style focus
- Red LEDs for night vision
- Also possible to use 3 x AAA alkaline (not included)



45 AND 410 LUMENS



RECHARGEABLE



RED LEDS IN FRONT



FLASHLIGHTS BLISTER AND POS DISPLAY

P110 700P110**Handy, lightweight flashlight with sliding focus**

- Handy design that fits right into your pocket
- Complete with 1 AA battery, lanyard and clip
- Delivered in blister and POS box



110 LUMENS



EXTREMELY DURABLE



IP45

P320R 700P320R**Rechargeable handy sized flashlight**

- Sliding focus (wide beam and long distance spot up to 230 m)
- 2 light modes: High beam (320 lm) – low beam (63 lm)
- Complete with batteries, lanyard and belt pouch



320 LUMENS



IP45 / III



USB CABLE INCLUDED

P370 700P370**Extremely durable, handy and lightweight flashlight**

- Sliding focus (wide beam and long distance spot up to 230 m)
- Bright light – 370 lumens
- Can break 1-layer glass in emergency



370 LUMENS



EXTREMELY DURABLE



3 X AAA ALKALINE

P610 700P610**Extremely durable flashlight with zoom and up to 610 lumens**

- Sliding focus (wide beam and long distance spot up to 260 m)
- 2 light outputs (610 & 83 lumens)
- Shock proof from a height of 1 meter



610 LUMENS

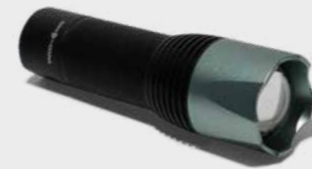


EXTREMELY DURABLE



SLIDING FOCUS

FLASHLIGHTS BOX

S1 700S1**Extremely durable flashlight with zoom and 4 light modes**

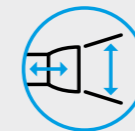
- Sliding focus (wide beam and long distance spot up to 250 m)
- 4 digital light modes:
- Stepless dimming, strobe, emergency flash, SOS signal



EXTREMELY DURABLE



4 DIGITAL LIGHT MODES



SLIDING FOCUS

S5 700S5**Extremely durable, handy and lightweight flashlight**

- Sliding focus (wide beam and long distance spot up to 150 m)
- Bright light – 320 lumens
- Optical lens



320 LUMENS



EXTREMELY DURABLE



3 X AAA ALKALINE

S7 700S7**Extremely durable, slim and lightweight flashlight**

- Focused spot up to 48 m
- Clip for mounting
- Slim design – fits into your work pocket



110 LUMENS



EXTREMELY DURABLE



2 X AAA ALKALINE

S8 700S8 A OR B**Rechargeable, handy flashlight of very good quality**

- Sliding focus (wide beam and long distance spot up to 250 m)
- 2 light modes: High beam (810 lm) – low beam (175 lm)
- Unique turn-to-cover USB charging hole



81 LUMENS



IP65 / IK 07



2-IN-1 CHARGER

FLASHLIGHTS BOX

S10 700S10



Handy, little lightweight flashlight with great light output

- Handy design that fits right into your pocket
- Great light output with a beam distance up to 65 m
- Durable lamp in aerospace grade aluminium



90 LUMENS



EXTREMELY DURABLE



IP65

S9 UV 700S9



Handy UV flashlight for the professional

- Ideal for fluid leak detection and many other purposes
- Approved for full air conditioning testing (leak identification)
- Resistant to water and dust (IP67)



395-410NM



DURABLE UV



IP67



INSPECTION LAMPS

D0 14050



Flashlight at bottom and frontlight on side

- Handy for inspection work, but really for multi-functional use
- Convenient charging – comes with USB cable
- Ideal for painting work due to high colour rendering (CRI 95+)



DUO LIGHT OUTPUT

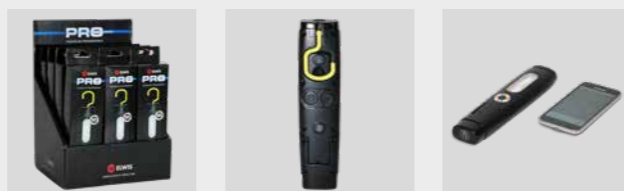


IK07



HIGH CRI

D2 14052



Handy and flexible hand lamp and flashlight in one

- With high colour rendering index (95+)
- Suited for all markets – automotive – painting, etc.
- Flex function (180°)



80 TO 250 LUMENS



HIGH CRI



HOOK AND FLEX 180°

D4 14054



Handy and flexible, slimline hand lamp and flashlight in one

- Able to illuminate in tight spaces
- Directional light with 2 different light outputs
- Great for inspecting hard to reach engine parts



80 TO 420 LUMENS



HIGH CRI



DUO LIGHT & FLEX

D6 14056



Robust and flexible hand lamp and flashlight in one

- Suited for all markets – automotive – painting etc.
- With high colour rendering index (95+)
- Directional light – 4 different light outputs (110 to 500 lumens)



IP65 & IK07



HIGH CRI



FLEXIBLE

NEW PRO SERIES LAMPS COMING UP LATER THIS YEAR.

Rechargeable inspection lamps: Featuring new technology and design with easy battery shift for 24/7 use of the lamps. Up to 600 lumens with stepless dimming up and down. Strong magnets on the reverse and in the bottom. New Task lamps up to 5000 lumen. Low weight. Low power consumption. Build in cable roll up on back. For more information or ordering please contact lighting@elwis.com.



TASK LAMPS

TL2 80020 A OR B



Handy, rechargeable task lamp with multi purpose clip-on functions

- Reflector shaped to give approx. 90° beam angle and bright working light
- 2-step light outcome (600 to 1200 lumens) with stepless dimmer between steps
- Flexible light direction using practical, turnable clip-on rod
- Hook – attach via the turnable clip-on rod
- Foot stand – attach via the turnable clip-on rod
- Exchangeable battery which can be charged in or outside the lamp
- Comes with foot stand, hook, clip-on connector/rod, battery and 230V charger (EU or UK version)



600-1200
LUMENS



MULTI
FUNCTION USE



EXCHANGEABLE
BATTERY

TASK LAMPS ACCESSORIES

MAGNET FOR TL2

80020-S1



Very powerful magnet for TL2

- Very practical magnet with clip connector for TL2
- Easy to bring along
- Strong magnetic power
- Place the magnet on a workbench or any surface and use it as a lamp holder
- Clip on the lamp, place the magnet and tilt the lamp in your desired direction

BONNET FOR TL2

80020-S2



Bonnet holder for TL2

- Very practical, telescopic bonnet holder for TL2
- Comes with 2 clip connector sets for 2 x TL2
- Easy to mount on the helmet
- A bonnet holder with TL2 provides great light into the engine compartment
- You can direct the light in your desired direction using the clip connectors

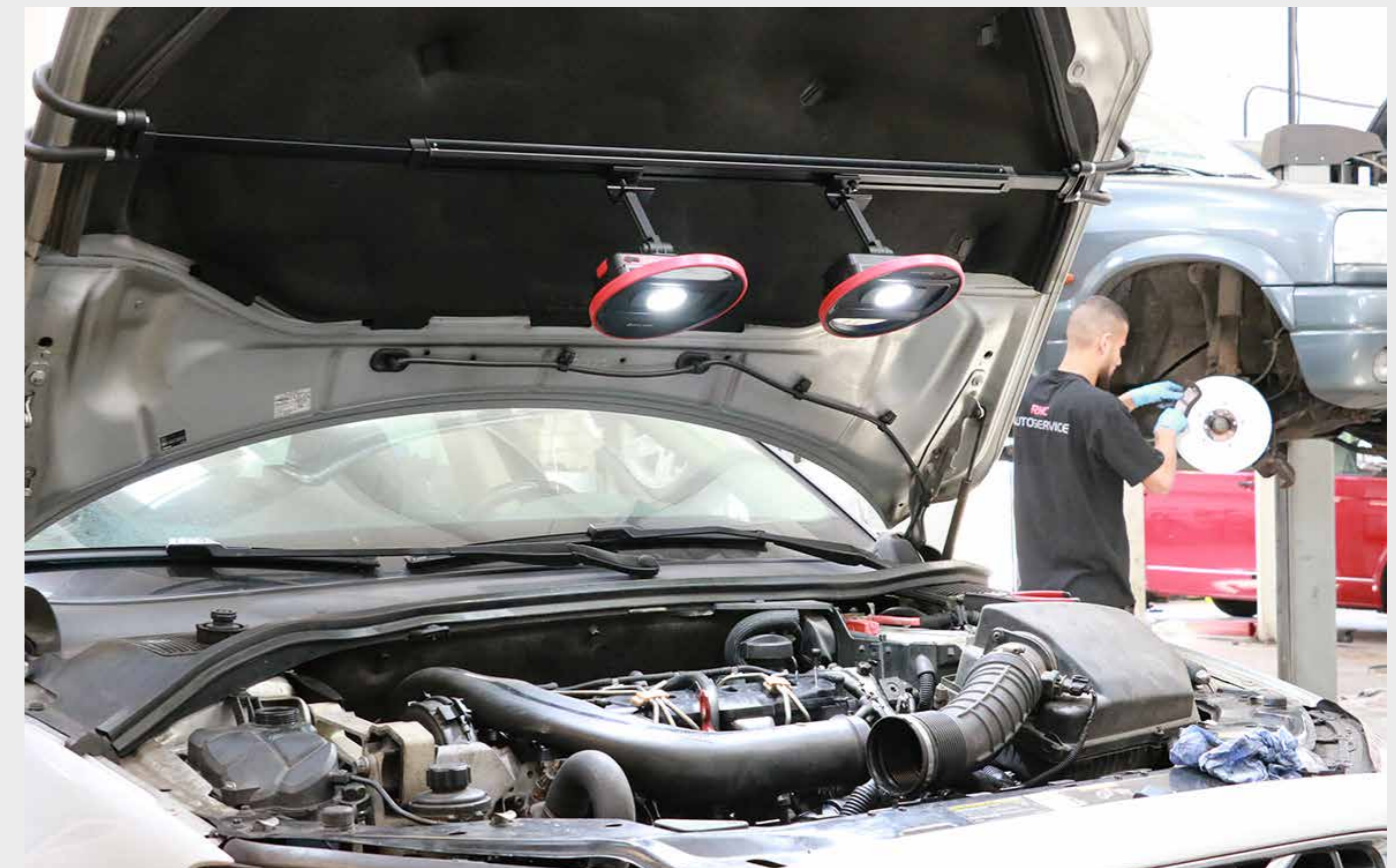
BATTERY FOR TL2

80020-S3

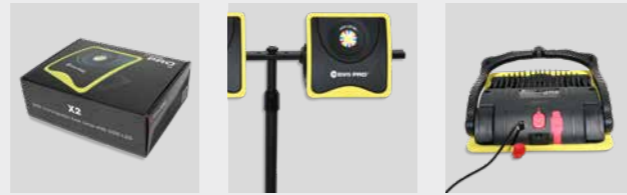


Rechargeable battery for TL2

- Practical battery with sliding grip for clip connector
- Easily portable as a spare battery
- Easy to change
- Charging indicator on battery



TASK LAMPS

X2 80032 A OR B

Take-anywhere task lamp with a bright working light and high CRI

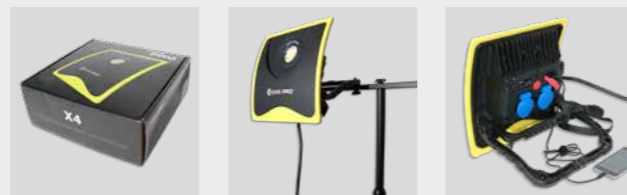
- Rechargeable – comes with 230V charger and USB powerbank
- Reflector shaped to give approx. 110° beam angle
- 2-step light beam: high 1700 lumens and low 1000 lumens
- High colour rendering index (CRI) 95+
- Adjustable foot stand/mounting arm for fixing to tripod, common walls or standing on the floor
- Particularly well suited for work requiring colour accuracy or just to give a good, true working light

1000-1700
LUMENS

HIGH CRI



RECHARGEABLE

X4 80034 A OR B

Extremely durable task lamp with cable & high CRI

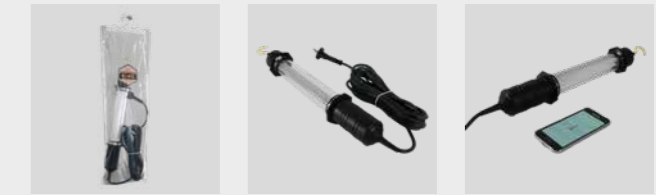
- Bright working light – reflector shaped to give approx. 90° beam angle
- High Colour Rendering Index (CRI 95+)
- 2-step light beam: high 3800 lumens and low 1800 lumens
- 2 adjustable foot stand/mounting arms – one with cable holder
- 2 power outlets equipped with overload protection system and USB outlet
- Cable (5 m) with either EU (A) or UK (B) plug
- A good, reliable lamp that will not let the professional down on the job

1800-3800
LUMENS

HIGH CRI

EXTREMELY
DURABLE

INSPECTION LAMPS, FLUORESCENT TUBE

CLASSIC 11W 19EE011 A OR B

Fluorescent inspection lamp with cable – the Classic of ELWIS

- Extremely durable hand lamp approved for rough service
- Can withstand being run over by a vehicle up to 1.8 tonnes
- Highly resistant to water and dust (IP65)
- Oil and chemical resistant
- 11W – 230 V – electronic ballast
- Hexagonal “no-roll” design
- Strong nylon hook
- Complete range of spare parts to prolong the lifetime of the lamp
- Cable (5 m) with either EU (A) or UK (B) plug



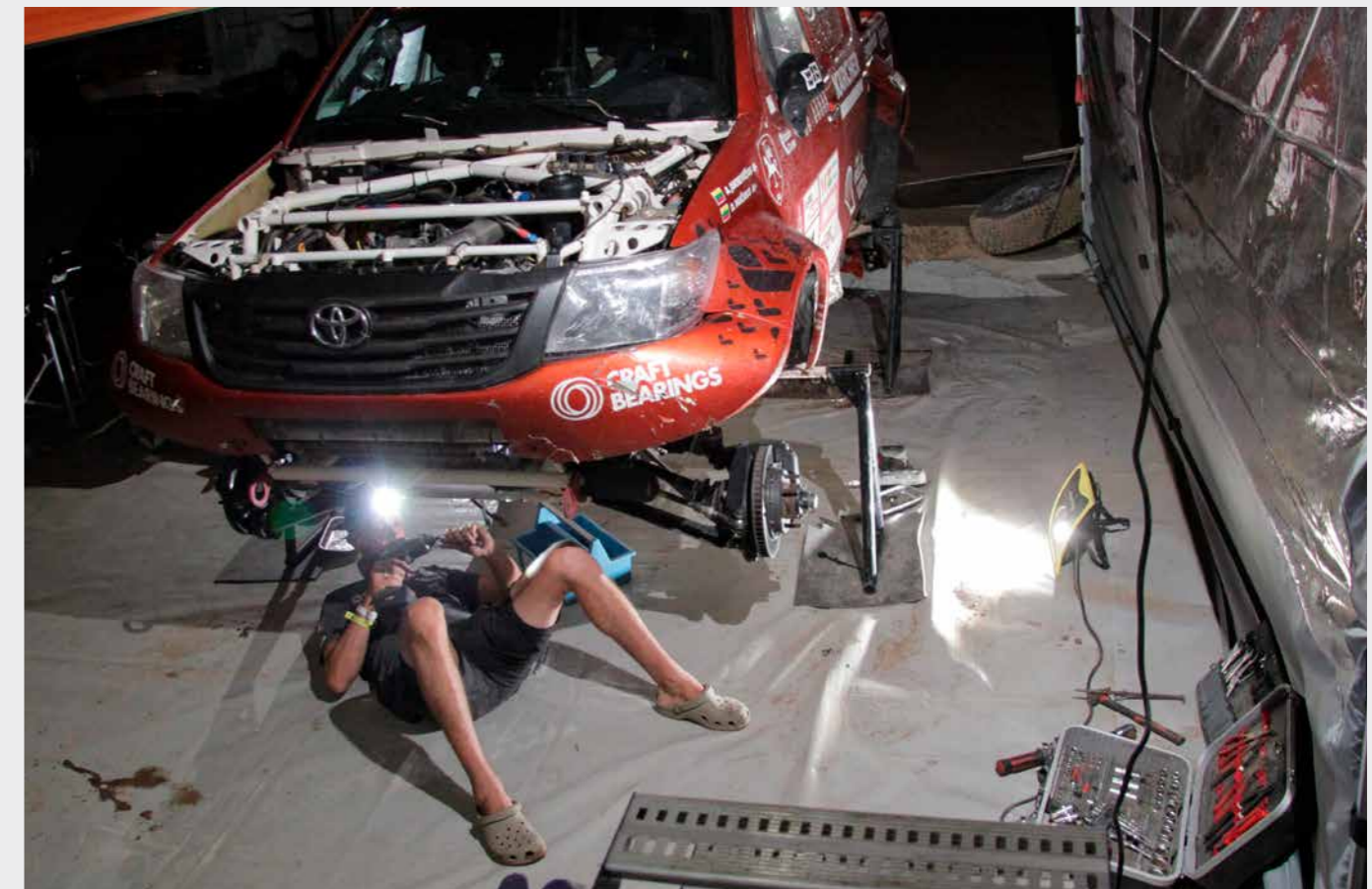
IP65



DROP TESTED



HOOK



POCKET SERIES

The Pocket Series range is our budget line. The Pocket series is a range of good and simple products that offers end users practicality at very attractive prices.

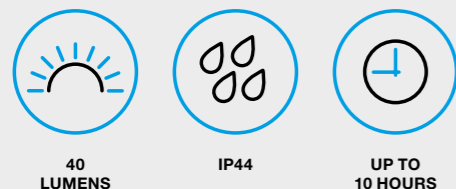
POCKET SERIES HEADLAMPS

H40 600H40

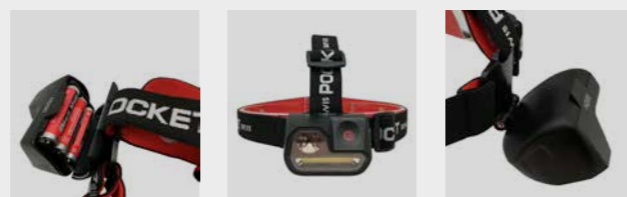


Mini headlamp with 40 lumens

- Only 30 g. incl. batteries (2 x CR2025).
- Switch on front of headlamp
- Delivered in blister and POS box



H200 600H200



Headlamp with both white and red light

- Both narrow and wide beam
- Read light for night vision
- Soft finger touch to change switch mode and on/off



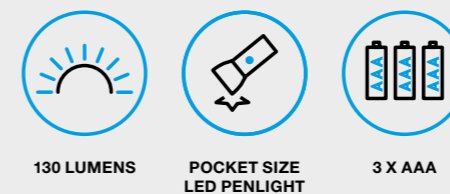
POCKET SERIES FLASHLIGHTS

P130 60085

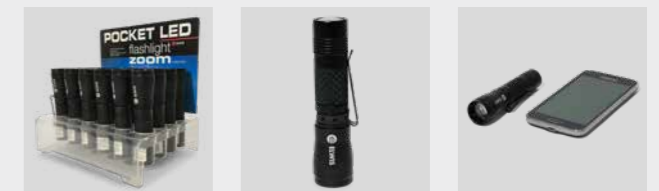


Slim, pocket size LED penlight with belt clip and base magnet

- 130 lumens
- Comes in counter display of 12 pieces
- Blister pack with "Try me!" function

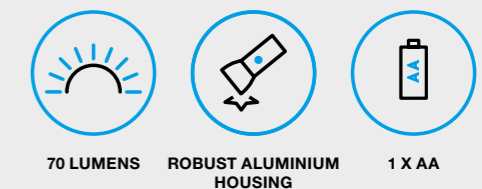


P60 60032



Neat "take anywhere" mini LED flashlight with zoom

- Produced in robust aluminium housing
- Supplied with steel clip and 1 x AA battery
- Fluorescent on/off switch

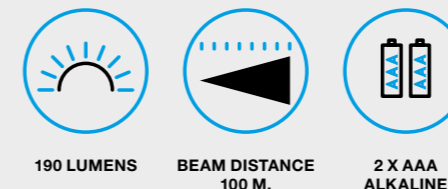


P190 60040



Neat "take anywhere" LED pocket light with zoom

- Produced in aluminium housing
- Supplied with steel clip
- Comes in a 24 piece display



POCKET P300

COMING UP SOON



- 300 lumen flashlight
- Using 3 x AAA
- Twist focus Zoom
- Lighting time 4 hours

CHARGERS & BATTERIES

FOR TL2 CHG008 – EU / CHG009 – UK



Adaptor w/mounted lead: Required input: 100V-240V, 50-60Hz.
Output: DC12V 1A

FOR S8, H2-R, C5, D0, D2, D4, D6, P320-R: CHG011 – EU / CHG012 – UK



Charger: Required input: 100V-240V, 50-60Hz – Output DC5V – 1A max (USB connector)

FOR USB COMPATIBLE LAMPS

CHG004



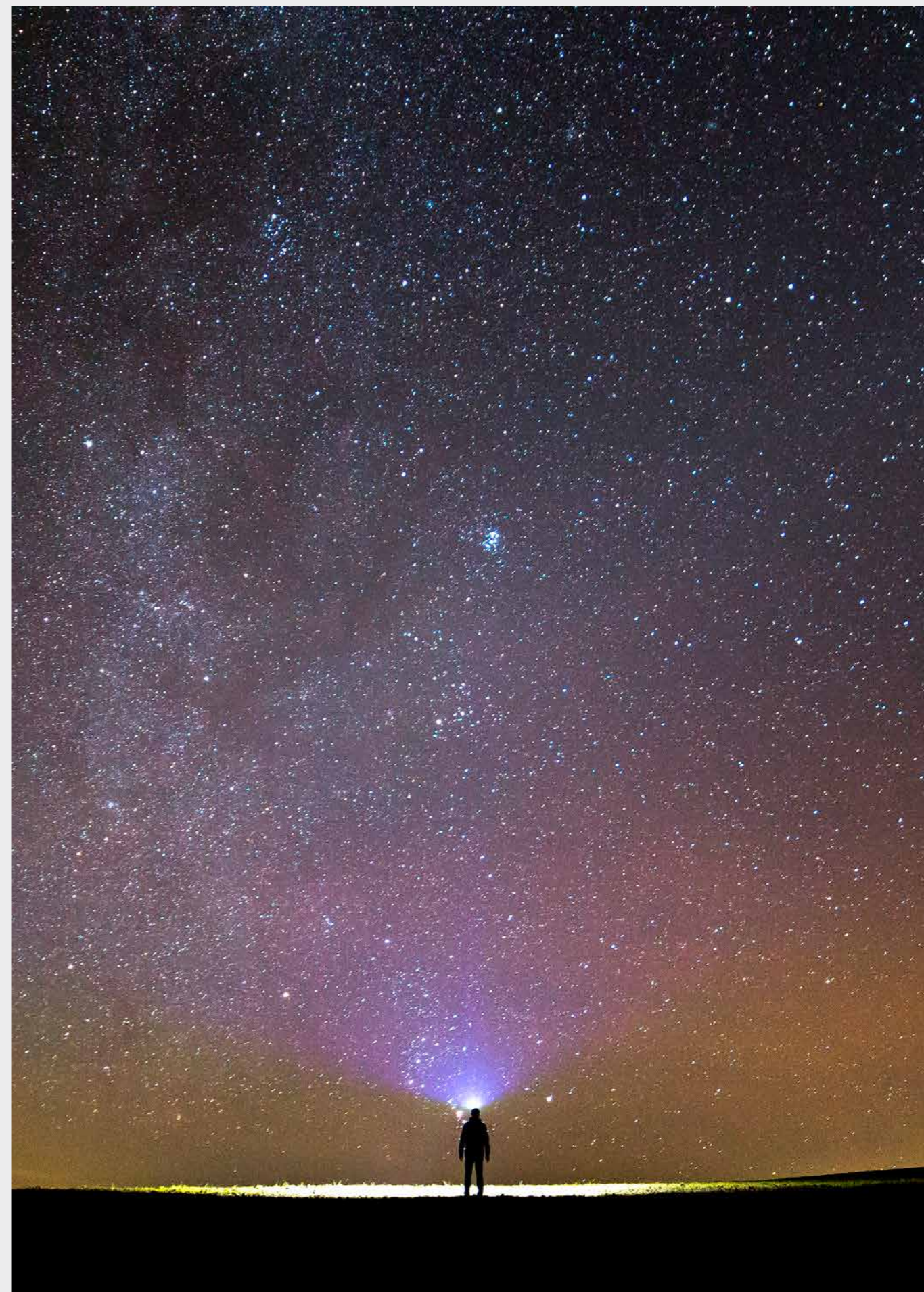
Car charger (5V 1A USB): Input 12-24V DC, Output 1000mA (USB connector)

BATTERY FOR PRO H4-R BAT010



Extra battery for the PRO H4-R headlamp

- Spare/replacement battery for the Elwis PRO H4-R headlamp
- Single sales box designed to either stand, lie or hang as required
- Can charge inside or outside the lamp using the cable that comes with the PRO H4-R headlamp
- Small and handy – easy to bring along
- Spare batteries help you avoid running out of power – just remember to charge the other battery while working



FIND US ON THESE PLATFORMS



ELWIS LIGHTING



Elwis Lighting
Sandtoften 11
2820 Gentofte
Denmark

TEL (+45) 70 20 10 24
FAX (+45) 70 26 10 24
lighting@elwis.com